



5 Color Palettes

The Eye II series provides more than 5 color palettes for true colorized temperature mapping, including "white hot" "black hot" "red hot" "color" and "hot target highlight". Switching between different color palettes is fast and easy.



Model	 E3Plus V2.0	 E3Max V2.0
Detector Resolution, pixels	384×288	
Pixel Size, μm	12	
NETD, mK	≤40	
Frame Rate, Hz	50	
Objective Lens, mm	25	35
Field of View	10.5°×7.9°	7.5°×5.7°
Display Resolution, pixels	1280×960 LCOS	
Magnification, ×	2.5-10	3.5-14.0
Max. Battery Life, h (Power saving mode)	7	
Dimension, mm	181×65×64	186×65×64
Weight, g	<450	
Detection Range, m (Target size:1.7m×0.5m, P(n)=99%)	1298	1818

Eye II Series v2.0

12μm detector, lower power consumption and multifunctional operations enhance and record the excellent moment of your outdoor activities.

Lighter and longer.

E3PLUS V2.0 / E3MAX V2.0



IRay Technology Co., Ltd.

Tel: 400-998-3088

Fax: +86-535-3410604

Mail: infirayoutdoor@infiray.com

Web: www.infirayoutdoor.com

Add: 11th Guiyang Street, YEDA, Yantai 264006, P.R.China





High Image Quality

MATRIX III

The Eye II series is embedded with IRay independently developed high performance VOx detector which allows you to get high detailed thermal images, it will be much simpler to search targets in darkness. The Eye II series has excellent performance in critical temperature range. Matched with Matrix III™ powerful algorithm, it can improve the image contrast automatically, highlight the target and strengthen the image hierarchy, that makes outstanding and sharp image effect.



HD Micro Display

1280x960 high resolution internal display offers crisp image and vivid colors.

Pocket-Sized Thermal Vision Monocular

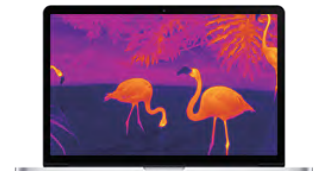
The InfiRay Eye II series is a pocket-sized thermal vision monocular for exploring the outdoors- at night and in low-light conditions. Eye II reveals your surroundings and helps you see people, objects and animals over one thousand meters away. Simple to use, with still image and video recording, Eye II is the perfect companion, whether in the back country or your own backyard.

Components controls



Built-in Video Recorder and WiFi Connection

The monocular has 8GB build-in memory to store the captured images and video recording and WiFi module which allows 4 connections simultaneously.



iOS

Android

Pad

Laptop

High Image Frequency

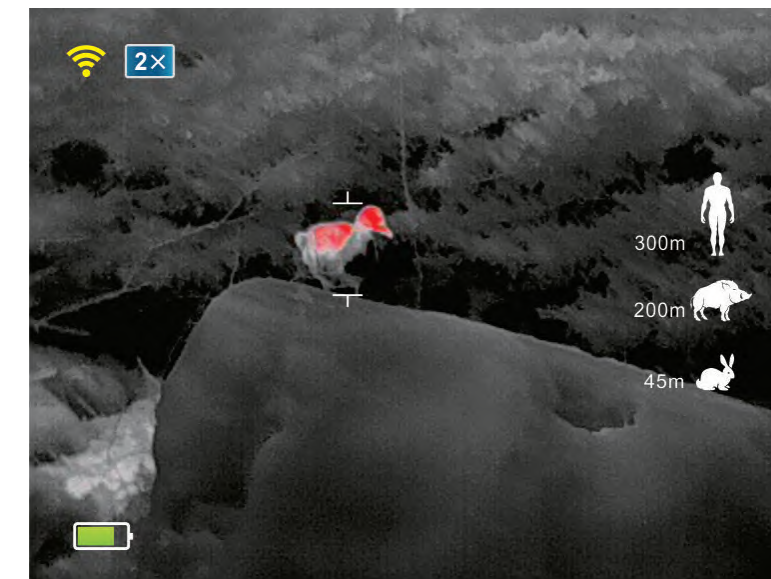
50Hz

The 50Hz frame rate guarantees you to capture every moment that you want to catch.



12μm Thermal Imaging Sensor

When using the same lens, 12μm has a longer detection distance than 17μm.



Stadiametric Rangefinder

Based on estimated heights of targets, users can get the rough distance from the target with the build-in stadiametric rangefinder fast and easy.

12x Magnification

Up to 12-time magnification to identify the target easier.

Picture-in-Picture Function



Picture-in-Picture improves accuracy by providing a 2x magnified image of the reticle area at the top of the display. It helps to zoom in on a target while retaining the rest of the field of view visible.

Hot Target Tracking

Tracking the hottest spot in the scene automatically and discovering the target quickly.

