



Model



HP13

Resolution, pixels	256×192
Pixel Size, μm	12
NETD, mK	≤50
Frame Rate, Hz	25
Objective Lens, mm	13
Field of View	13.3° (H) × 10.0° (V)
Display, pixels	1.63" AMOLED
E-zoom	×1 \ ×2 \ ×3 \ ×4
Laser, nm	650
Reticle	Multiple Patterns and Color Options
Battery / Max. Battery Life, h	CR123A / 4.5
Handle Battery / Battery Life, h	18650 / 9
IP Rating	IP67
Weight (without battery), g	<250
Dimension, mm	58.5×80.5×74.5
Mount	Picatinny
Detection Range, m (Target size:1.7m×0.5m, P(n)=99%)	670



Holo Series HP13

Holo is a direct view multifunctional thermal reflex sight embedded with the IRay's latest generation thermal imaging detector . The **1.63" OLED display** brings excellent visual experience of quick target acquisition without visual difference. It can be the ideal option for those users who want thermal aiming camera with compact size, easy operation and multiple installation interfaces (side **picatinny** available).



IRay Technology Co., Ltd.

Tel: 400-998-3088 Fax: +86-535-3410604
 Mail: infirayoutdoor@infray.com Web: www.infrayoutdoor.com
 Add: 11th Guiyang Street, YEDA, Yantai 264006, P.R.China





High Image Quality

The high performance IRay VOx detector and the advanced image processing create brilliant and sharp images.



Compact Size and Lightweight

With reasonable layout, compact structure, user-friendly controls, ergonomic design and light weight ensure the Holo Series more comfortable and convenient for outdoor usage.

Low Power Consumption

< 0.7w

Low power consumption guarantees you don't have to worry about the power supply.

Friendly Operation

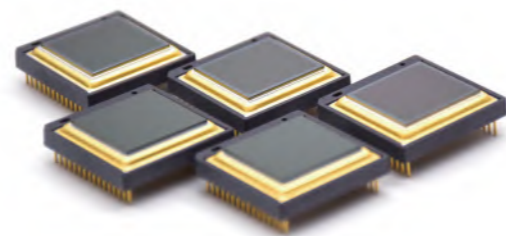
All function can be controlled by a five-direction button, which makes the operations easy and quick.



1.63" AMOLED Display

Holo series is designed for directly aiming with a 1.63" AMOLED display, that user can observe and aim fast and accurately using both eyes. It's more comfortable and clearer to observe the targets yet without visual difference.

12µm Ceramic Detector



Holo HP13 is equipped with new ceramic encapsulated detector, which are lighter, lower power consumption and last longer.

5 Color Palettes

Holo HP13 provides more than 5 color palettes for true colorized temperature mapping, including "white hot" "black hot" "red hot" "color" and "hot target highlight". Switching between different color palettes is fast and easy.



IP67 Fully Waterproof

IP67 waterproof-rated protection ensures the Holo Series performs perfectly in humid environment, heavy rain, snowfall and submersion in 1 meter of water for up to 30 minutes.

Multiple Mounts for Easy Clamping

For convenient operation, Holo series provides a quick-disassembled rail clamp for installation on hunting weapons that equipped with Picatinny rails. Beyond that, there is a short Picatinny rail on the side for variety widely usage, so as to install additional equipment.

Sight or Monocular, whichever you choose

In addition to be used as a thermal imaging sight on firearms, the Holo series can also be matched with other devices for searching.



Handle Battery > 8h

The Holo handle can be powered by a single 18650 battery. For example, the 2000mAh battery capacity can be used to supply a minimum of 8h to the unit.

670m Longer Detection Range

Depending on model, Holo HP13 is capable of detecting an average human-size target, dressed in outerwear, at a range up to 670m in complete darkness.

